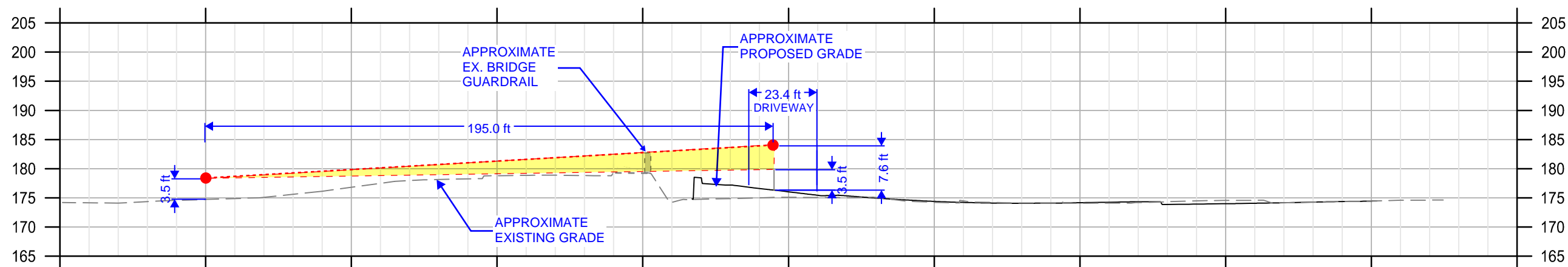
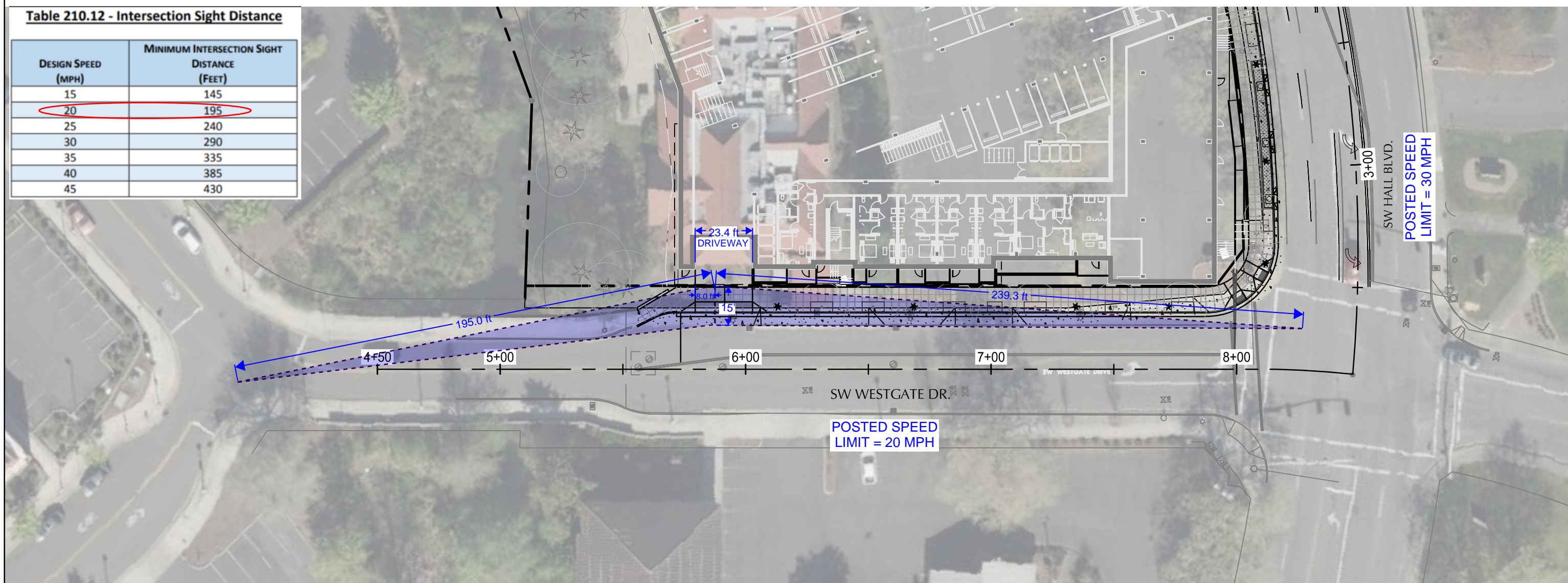


**Table 210.12 - Intersection Sight Distance**

DESIGN SPEED (MPH)	MINIMUM INTERSECTION SIGHT DISTANCE (FEET)
15	145
20	195
25	240
30	290
35	335
40	385
45	430



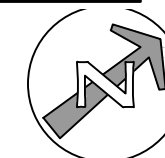
PROFILE ALONG SIGHT DISTANCE LINES  
SCALE: 1"=40' HORIZ.  
1"=20' VERT.

**NOTES**

1. SIGHT DISTANCE BASED ON CITY OF BEAVERTON EDM SECTION 210.18, TABLE 210.12.
2. THE DRIVER'S EYE IS ASSUMED TO BE 15 FEET FROM THE NEAR EDGE OF THE NEAREST LANE OF THE INTERSECTING STREET, AND AT A HEIGHT RANGE OF 3.5 FEET TO 7.6 FEET ABOVE THE APPROACH STREET PAVEMENT.
3. THE TOP OF THE VEHICLE ON THE INTERSECTING STREET IS ASSUMED TO BE 3.5 FEET ABOVE THE CROSS-STREET PAVEMENT.
4. TRAFFIC SPEED USED IN THE CALCULATION IS THE POSTED SPEED OF THE INTERSECTING STREET.



EXPIRATION DATE: 12/31/24



SCALE: 1" = 40'

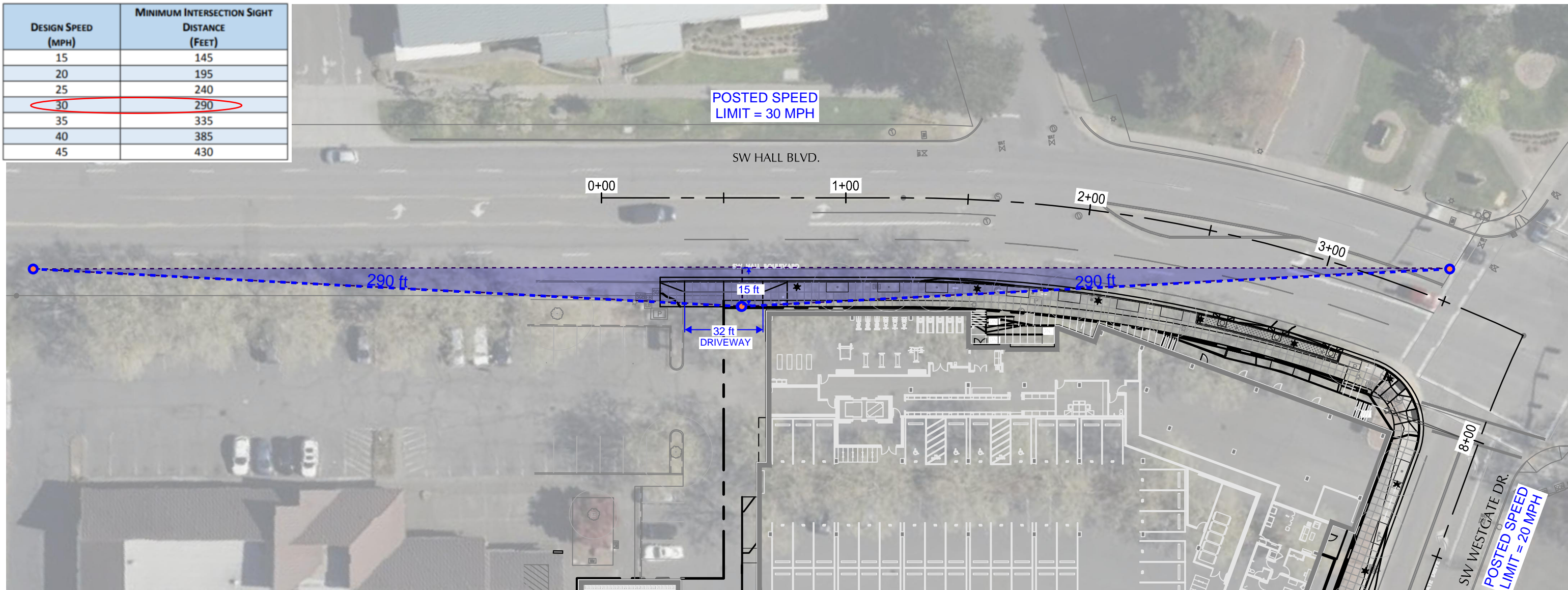
**Received  
Planning Division  
09/25/2023**

SIGHT DISTANCE ANALYSIS BASEMAP  
SW WESTGATE DR.

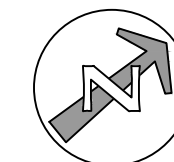


**Table 210.12 - Intersection Sight Distance**

DESIGN SPEED (MPH)	MINIMUM INTERSECTION SIGHT DISTANCE (FEET)
15	145
20	195
25	240
30	290
35	335
40	385
45	430



EXPIRATION DATE: 12/31/24



SCALE: 1" = 40'

**NOTES**

1. SIGHT DISTANCE BASED ON CITY OF BEAVERTON EDM SECTION 210.18, TABLE 210.12.
2. THE DRIVER'S EYE IS ASSUMED TO BE 15 FEET FROM THE NEAR EDGE OF THE NEAREST LANE OF THE INTERSECTING STREET, AND AT A HEIGHT RANGE OF 3.5 FEET TO 7.6 FEET ABOVE THE APPROACH STREET PAVEMENT.
3. THE TOP OF THE VEHICLE ON THE INTERSECTING STREET IS ASSUMED TO BE 3.5 FEET ABOVE THE CROSS-STREET PAVEMENT.
4. TRAFFIC SPEED USED IN THE CALCULATION IS THE POSTED SPEED OF THE INTERSECTING STREET.

SIGHT DISTANCE ANALYSIS BASEMAP  
SW HALL BLVD.

